

Tectonic Sconce, 2021

Open Edition

Dimensions: 15" h x 15" w x 5" d

Materials: Stoneware, pigment, glaze, patinated brass, electrical components

Lamp Type: (3) GY6.35 Base - 120v LED Bi-Pin Bulbs

Fixture Type: Hardwire

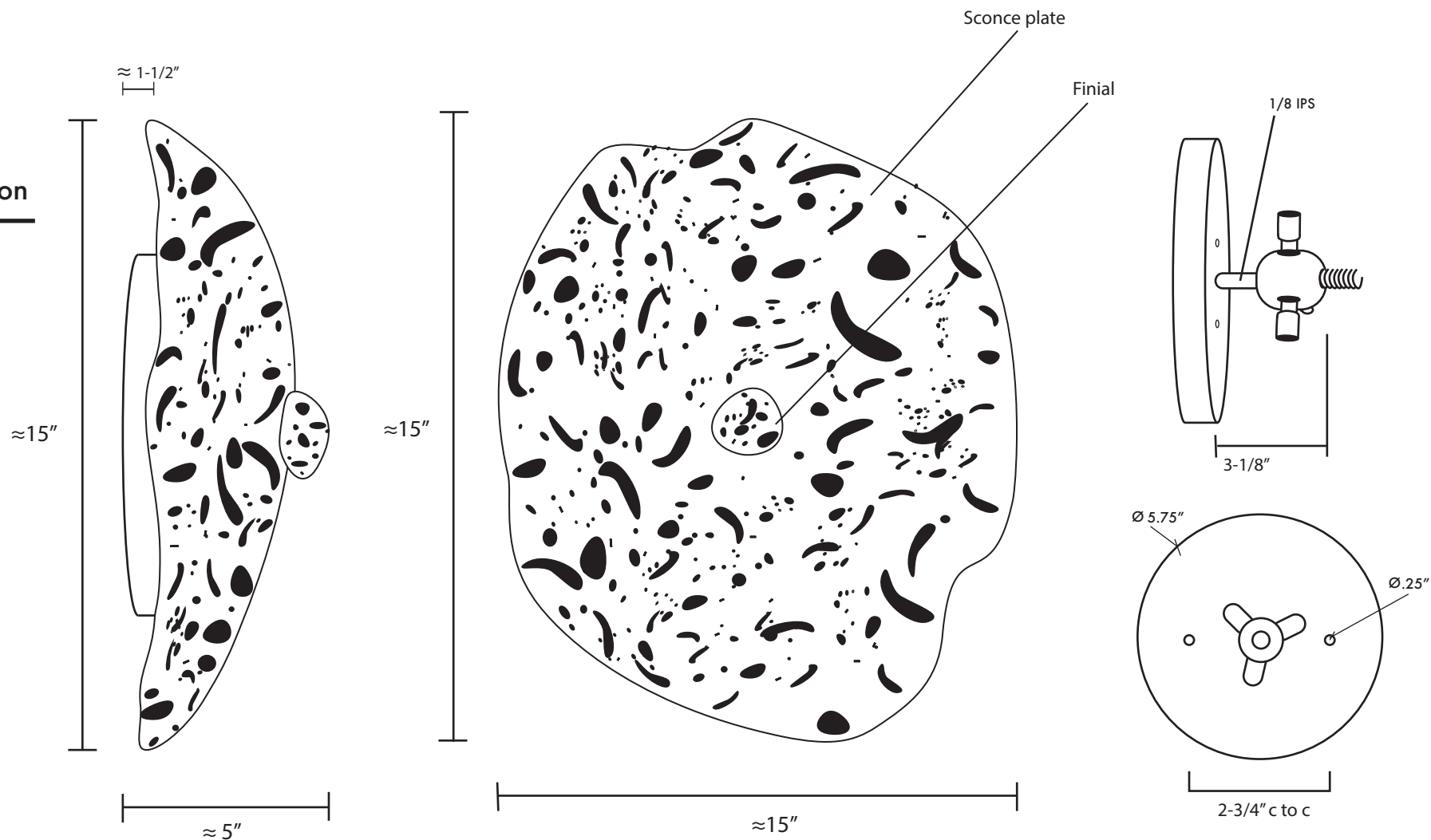
Notes:

1. This item is handmade and may vary slightly from piece to piece.

2. UL Certification available upon request.

3. For customizations, please email us at hello@lgsstudio.com

Lead Time: 8-12 weeks



Finish Options:



MS | Bone & Ecrú



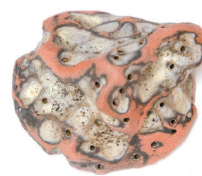
MS | Lavender & Dune



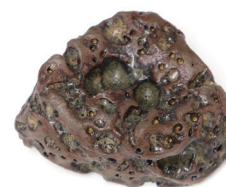
DW | Chartreuse + Ochre



MS | Avocado & Ecrú



DW | Terracotta & Bleached Black



DW | Hazelnut & Temmoku



DW | Onyx & Dune



DW | Mazerine & Oasis Blue