

Monolith Side Table, 2020

Open Edition

Dimensions: ≈ 24" h x 16" w

Materials: Stoneware, pigment, glaze

Notes:

1. This item is handmade and will vary slightly from piece to piece. We treat each Monolith Side Table as a one-of-a-kind work.

2. For customizations, please email us at hello@lgsstudio.com

Lead Time: 8-12 weeks

Finish Options*:



MS | Bone & Ecru



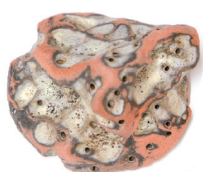
MS | Lavender & Dune



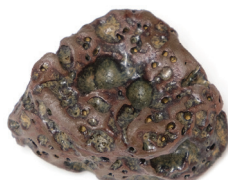
DW | Chartreuse + Ochre



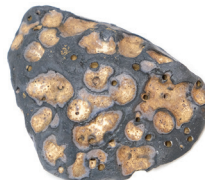
MS | Avocado & Ecru



DW | Terracotta & Bleached Black



DW | Hazelnut & Temmoku



DW | Onyx & Dune



DW | Mazerine & Oasis Blue