

*Double Lithic Sconce, 2021*

**Open Edition**

**Dimensions:** 23" h x 6" w x 7" d

**Materials:** Stoneware, pigment, glaze, patinated brass, electrical components

**Lamp Type:** E26 Base G25 Tala Porcelain Bulb

**Fixture Type:** Hardwire

**Notes:**

1. This item is handmade and may vary slightly from piece to piece.
2. UL Certification available upon request.
3. For customizations, please email us at [hello@lgsstudio.com](mailto:hello@lgsstudio.com)

**Lead Time:** 8-12 weeks

**Finish Options:**



MS | Bone & Ecru



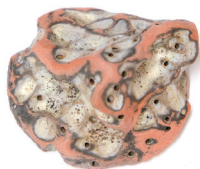
MS | Lavender & Dune



DW | Chartreuse + Ochre



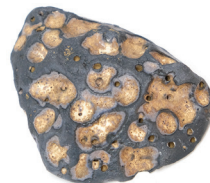
MS | Avocado & Ecru



DW | Terracotta & Bleached Black



DW | Hazelnut & Temmoku



DW | Onyx & Dune



DW | Mazerine & Oasis Blue